

Eagle PERC 60B

285-305 Watt

MONO CRYSTALLINE MODULE

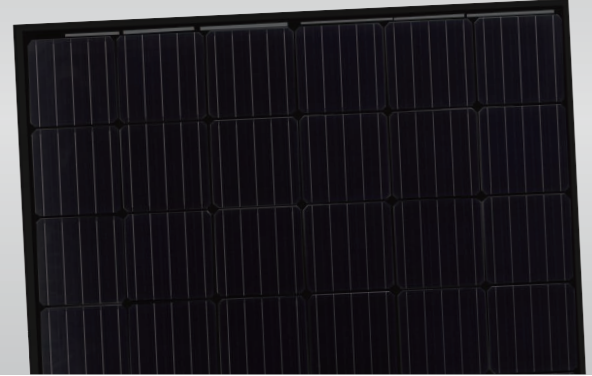
Positive power tolerance of 0~+3%

ISO9001:2008、ISO14001:2004、OHSAS18001 certified factory.
IEC61215、IEC61730 certified products.



PERC

(5BB)



KEY FEATURES



5 Busbar Solar Cell:

5 busbar cell design improves module efficiency and offers better aesthetic appearance for rooftop in stallation.



High Efficiency:

Higher module conversion efficiency (up to 18.63%) benefit from Passivated Emmiter Rear Contact (PERC) technology.



PID RESISTANT:

Excellent Anti-PID performance guarantee limited power degradation for mass production.



Low-light Performance:

Advanced glass and cell surface textured design ensure excellent performance in low-light tenvironment.



Severe Weather Resilience:

Certified to withstand: wind load (2400 Pascal) and snow load (5400 Pascal).

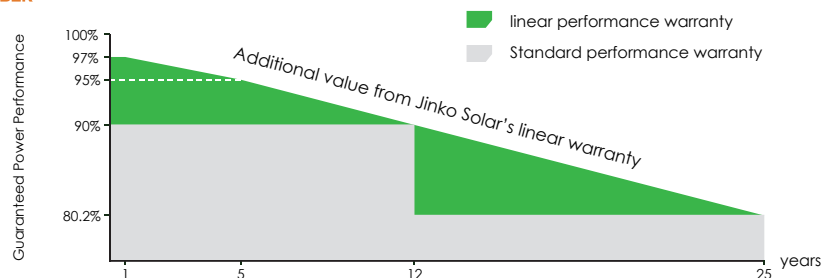


Durability against extreme environmental conditions:

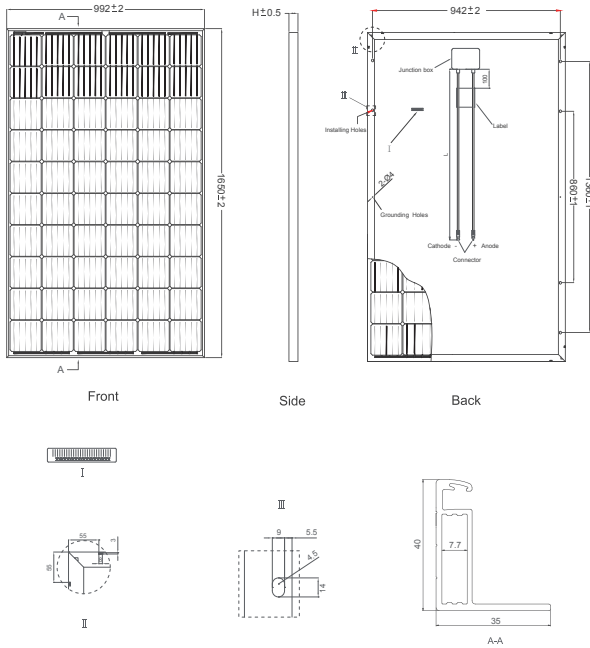
High salt mist and ammonia resistance certified by TUV NORD.

LINEAR PERFORMANCE WARRANTY

10 Year Product Warranty • 25 Year Linear Power Warranty



Engineering Drawings

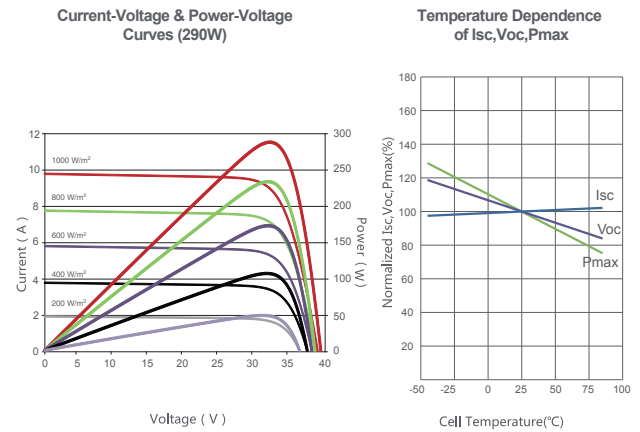


Packaging Configuration

(Two pallets = One stack)

26pcs/pallet, 52pcs/stack, 728 pcs/40'HQ Container

Electrical Performance & Temperature Dependence



Mechanical Characteristics

Cell Type	Mono-crystalline PERC 156×156mm (6 inch)
No. of cells	60 (6×10)
Dimensions	1650×992×40mm (65.00×39.05×1.57 inch)
Weight	19.0 kg (41.9 lbs)
Front Glass	3.2mm, High Transmission, Low Iron, Tempered Glass
Frame	Anodized Aluminium Alloy
Junction Box	IP67 Rated
Output Cables	TÜV 1×4.0mm², Length: 900mm or Customized Length

SPECIFICATIONS

Module Type	JKM285M-60B		JKM290M-60B		JKM295M-60B		JKM300M-60B		JKM305M-60B	
	STC	NOCT	STC	NOCT	STC	NOCT	STC	NOCT	STC	NOCT
Maximum Power (Pmax)	285Wp	212Wp	290Wp	216Wp	295Wp	220Wp	300Wp	224Wp	305Wp	227Wp
Maximum Power Voltage (Vmp)	32.0V	29.9V	32.2V	30.2V	32.4V	30.4V	32.6V	30.6V	32.8V	30.8V
Maximum Power Current (Imp)	8.90A	7.12A	9.02A	7.15A	9.10A	7.24A	9.21A	7.32A	9.30A	7.40A
Open-circuit Voltage (Voc)	38.7V	36.4V	39.5V	36.6V	39.7V	36.8V	40.1V	37.0V	40.3V	37.2V
Short-circuit Current (Isc)	9.51A	7.72A	9.55A	7.81A	9.61A	7.89A	9.72A	8.01A	9.83A	8.12A
Module Efficiency STC (%)	17.41%		17.72%		18.02%		18.33%		18.63%	
Operating Temperature(°C)	-40°C~+85°C									
Maximum system voltage	1000VDC (IEC)									
Maximum series fuse rating	20A									
Power tolerance	0~+3%									
Temperature coefficients of Pmax	-0.39%/°C									
Temperature coefficients of Voc	-0.29%/°C									
Temperature coefficients of Isc	0.05%/°C									
Nominal operating cell temperature (NOCT)	45±2°C									

STC: Irradiance 1000W/m² Cell Temperature 25°C AM=1.5

NOCT: Irradiance 800W/m² Ambient Temperature 20°C AM=1.5 Wind Speed 1m/s

* Power measurement tolerance: ± 3%